


EST. 2020

BOX MAKERS YARD BRISTOL

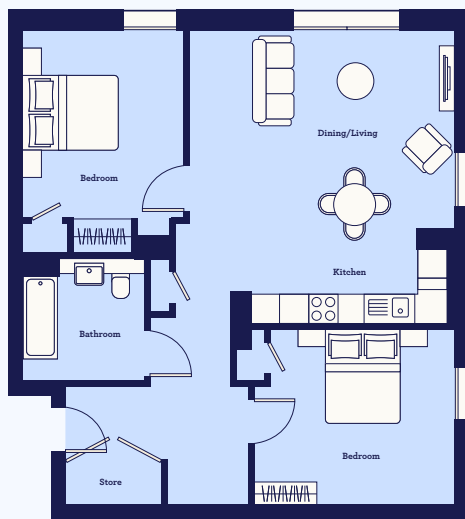
Homes for rent by  Legal & General

2 BED APARTMENT SUMMARY SHEET

SIZE	From 763sq.ft - 905sq.ft
RENT	From £1,590 pcm
DEPOSIT	One month's rent
TENANCY LENGTH	6 months – 5 years
FLOORS	G, 1, 2, 3, 4, 5, 6, 7, 8, 9, 10



TYPICAL 2 BED FLOOR PLAN



Apartment layouts can vary

LOTS OF LUSH EXTRAS

-  **WORK SPACES**
-  **ROOF TERRACE**
-  **ON SITE STAFF**
-  **HIGH SPEED BROADBAND INCLUDED**
-  **RESIDENTS' GYM**
-  **PETS WELCOME**
-  **PRIVATE DINING**
-  **DECORATE AS YOU PLEASE**

Some of the finer details: Pets are very welcome here because we know life wouldn't be the same without them, but we do charge pet rent. Private dining rooms are bookable for an hourly or daily rate. Your apartment should be as unique as you are, so feel free to decorate as you please. All we ask is that you make good before you move out.

